



## **KINEMATIC ANALYSIS OF FUNDAMENTAL SERVICE OF TENNIS PLAYERS**

**Akanksha\* & Dr. Inder Singh Pal\*\***

\* Research Scholar, Amity School of Physical Education & Sports Science, Amity University, Uttar Pradesh

\*\* Assistant Professor, Amity School of Physical Education & Sports Science, Amity University, Uttar Pradesh

### **Abstract:**

*This research paper presents the analysis of the tennis serve kinematically with reference to selected variables. It also attempts to describe and explain effects of other kinematic factors on the performance of the player. The author also draws a focus on biomechanical analysis of the corresponding racket and ball dynamics, presented together with its analogy with angles at various joints. The goal of the study is to help the coaches in finding out the shortcomings in the execution of particular movement. To acquire kinematical data, a digital Nikon D-5200 video recording camera with a frame rate of 30 frames per second, were used during the execution by placing it left side of horizontal bar and perpendicular to the sagittal plane. The selected kinematic variables were drawn at the time of execution of service by using joint-point method and C.G were found by using segmentation table suggested by hay (1993). On the basis of results it is concluded that C.G plays an important role in executing an effective skill. If the C.G falls forward/ behind the base of support then it affects the performance in many ways.*

### **Introduction:**

The major role of biomechanics is to enhance the performance of players and to eliminate /to diminish the risk of injury. Biomechanics is basically the study of forces and the effects produced by them. The analysis of human body movement can be done in various ways such as Anatomical analysis, biomechanical analysis, kinematic analysis etc.

Kinematics is an area of biomechanics dealing with determination and description of the human body movements. Quantitative measurement of the motion of interest and subsequent analysis based on the computed kinematic quantities allow investigators to go in-depth understanding of the movement itself and the common pattern of movements. The human body is a mechanical system with a large number of degrees of freedom and isolating a set of key performance characteristics/components is of crucial importance for effective performance enhancement in complex 3-dimensional (3-D) body motions such as the serve in Tennis. The kinematic assessment requires both knowledge of the movement characteristic and the ability to observe and analyze.

Success in tennis needs a combination of playing skills, good equipments, effective coaching and the knowledge of biomechanical aspects related to the performance of player. The advancement in sports biomechanics has given a new recognition to the tennis. If we see the development of tennis, biomechanics has contributed a lot. Tennis has changed entirely from being stylish to comfort. In tennis, an athlete transfers the energy of his body to ball through the tennis racket to generate spin and speed in ball. Energy can be in any form either potential or kinetic. The energy stored in spring under tension will be considered as potential energy.

### **Material and Methods:**

The methodology of the study consists of selection of subjects, selection of variables, criterion measures, filming protocol, and testing procedure

**Selection of Subject:**

The study sample included the three male tennis players of university ranges between the age category 18-25 yrs that has one-two year experience in training .All selected subjects have represented Amity University in North zone Tennis inter university. The subjects were selected on the basis of purposive sampling and the research design is experimental.

**Selection of Kinematic Variable:**

After considering the feasibility and also consulting with tennis coach and the respected guide the following kinematics variables for analysis are selected.

- ✓ Angle at various joints.
- ✓ Position of centre of gravity.
- ✓ Height of centre of gravity
- ✓ Position of racquet at the time of contact with ball.

**Experimental Filming Protocol:**

The data were collected in outdoor tennis court of Amity university (AUUP). Three subjects, who have represented Amity university in North Zone inter university tournament (2015) were recruited as subjects for the conduct of research. Two cameras one in sagital plane and other in frontal plane were placed to record the data .Sophisticated camera (Nikon d5200) was used for analyzing the data.60 digital snapshots with good quality and successfully performed were selected.



Figure 1: Subject 1

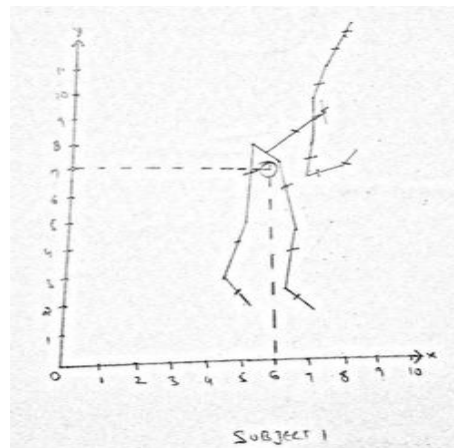


Figure 2: Subject 1

C.g. of the subject lying within the base of support which reveals that the subject is in properly balanced position to execute the drive. From the fig. 2 it clearly visible that when the drive is being executed the subject would gradually move from rear to front leg. However at the time of execution moment that is the moment when the ball contacts with the head of the racquet, the subject has fully extended the elbow which helps in building more racket head speed. The knee is bent which allows player to push harder off the ground and launch up more into the shot.

Body Segment	Relative Weight	Centre of gravity	OX	OY	Momentum(OX)	Momentum(Oy)
HEAD	0.073	0.4	7.2	9.4	0.6	9.4
TRUNK	0.507	0.7	6.8	8.5	4.3	8.5
THIGH(R)	0.103	1	6.5	6.4	0.6	6.4
THIGH(L)	0.103	1.1	5.5	6.9	0.7	6.9
CAIF(R)	0.403	0.8	6.6	3.9	0.1	3.9
CALF(L)	0.403	0.8	5	4.2	0.1	4.2
FOOT(R)	0.015	0.5	6.8	2.2	0.03	2.2

FOOT(L)	0.015	0.6	5.1	2.4	0.03	2.4
UPPER ARM(L)	0.026	0.7	7.6	7.4	0.2	10.4
FOREARM(L)	0.016	0.5	8.1	11.8	0.1	11.8
UPPER ARM(R)	0.026	0.6	7.3	7.4	0.1	7.4
FOREARM(R)	0.016	0.3	7.5	6.9	0.1	6.9

Table1: Segmentation Table



Figure3: Subject 2

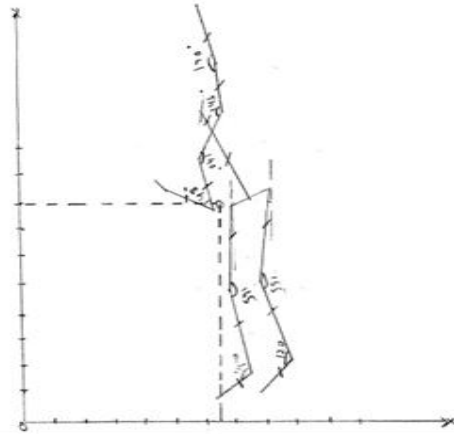


Figure 4: Subject 2

The player is transferring his body weight on the right foot so that he can add more power to service. His Cg is falling slightly forward which shows that he is in quite imbalanced position to play the stroke. The contact of the racquet with the ball is far ahead and it should have been made slightly behind so that greater linear velocity has been imparted to the ball.

Body Segment	OX	Relative Weight	Moment (OX)	OY	Moment (OY)
HEAD	6.3	0.075	0.4	11.1	0.8
TRUNK	6.9	0.507	3.4	9.7	4.9
UPPER ARM(L)	6.2	0.026	0.1	8.7	0.2
FOREARM(L)	5.6	0.016	0,08	8.3	0.1
FOREARM(R)	6.3	0.016	0.1	14.2	0.2
UPPERARM(R)	6.6	0.026	0.1	12.3	0.3
THIGH(L)	7	0.103	0.7	6.8	0.7
THIGH(R)	8.2	0.103	0.8	7.3	0.7
CALF(L)	7.2	0.043	0.3	3.6	0.1
CALF(R)	8.3	0.043	0.3	4.1	0.1
FOOT(L)	7.2	0.043	0.1	1.4	0.02
FOOT(R)	8.5	0.015	0.1	1.9	0.02

Table 2: Segmentation Table



Figure 5: Subject 3

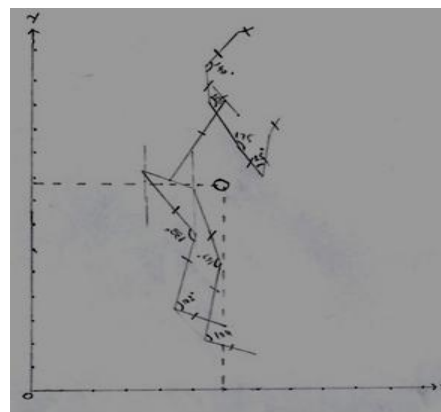


Figure 6: Subject 3

The techniques of subject 3 has some flaws as his elbow is not fully extended at the time of contact of ball with the racket which have more of a problem with letting the ball pass the contact point than not actually the ball reaching it. If he extends his elbow he should be able to nearly draw a straight line from his hitting arm elbow to his non dominant shoulder He is properly balanced to execute the backhand drive because his Cg falls within the base. The contact of the racquet head and ball is at the right moment. He is also shifted his body weight on the right foot so that he able to execute more power to his stroke.

Body Segment	OX	Relative Weight	Moment (OX)	OY	Moment (OY)
HEAD	5.9	0.075	0.4	12.3	0.8
TRUNK	5.2	0.507	2.6	10.9	5.5
UPPER ARM(L)	6.2	0.026	0.1	9.7	0.2
FOREARM(L)	7.2	0.016	0.1	9.6	0.1
FOREARM(R)	5.7	0.016	0.09	14.3	0.2
UPPERARM(R)	5.4	0.026	0.1	12.9	0.3
THIGH(L)	5.6	0.103	0.5	6.6	0.5
THIGH(R)	4.4	0.103	0.4	7.6	0.4
CALF(L)	4.2	0.043	0.2	4.2	0.1
CALF(R)	5.5	0.043	0.2	5.5	0.2
FOOT(L)	5.6	0.043	0.08	1.8	0.02
FOOT(R)	5	0.015	0.07	3.2	0.04
WRIST(R)	6.6	0.007	0.04	15.1	0.1
WRIST(L)	6.2	0.007	0.04	11.2	0.07

**Conclusion:**

Based on the analysis and within the limitation of present study following conclusion were drawn that:

- ✓ If at the time of impact the back foot is behind the front foot therefore it allows trunk to rotate which helps in generating the force.
- ✓ If the C.G. falls within the base then the player is in the most stable state to execute the skill.
- ✓ If the weight shifts from rear to front leg which enables player to generate more amount of thrust against the ground therefore generating more powerful jump in to the air.

**Recommendations:**

Based on the conclusions drawn in this study, the following recommendations have been made:

- ✓ The results of this study may be helpful for the analysis of other elements in Tennis.
- ✓ The results may be used by the tennis players for self evaluation of their photographic techniques.
- ✓ Similar studies would be conducted by using cinematography and multidimensional photographic as well as the video graphic techniques.
- ✓ The study would also be conducted on different age level, different performance level and also on different sex for comparing the performance.
- ✓ The finding of the present study may be helpful to the players to know the correct technique of tennis serve.

**References:**

1. Bartlet, R. (2007). Introduction to Sports Biomechanics Analyzing Hyman Movement Pattern L, Routledge Taylor and Francis Group,
2. Bhowmick and Pandey (2010), the relationship between selected of hook kinematic variables and the performance shots.

3. Durovic (2008), kinematic analysis of tennis serve in intermediate tennis players
4. Groppel, J. L. (1996). The Biomechanics of tennis: An Overview. Rules of muscular Strength, International Journal of Sport Biomechanics, 1986, 2, 141-155.
5. HSU (2008), kinematic analysis of forehand stroke between new players and the experienced tennis player.